

“Amphion Adult”; but this can scarcely be an adult seeing that it has only six pairs of appendages attached to the pereion; in these the branchiæ are present in a more or less advanced condition, existing as a single plume corresponding with each pair of appendages excepting the first gnathopoda; the plumes are attached near the middle to the pleural surface of the pereion, and taper gradually to each extremity.

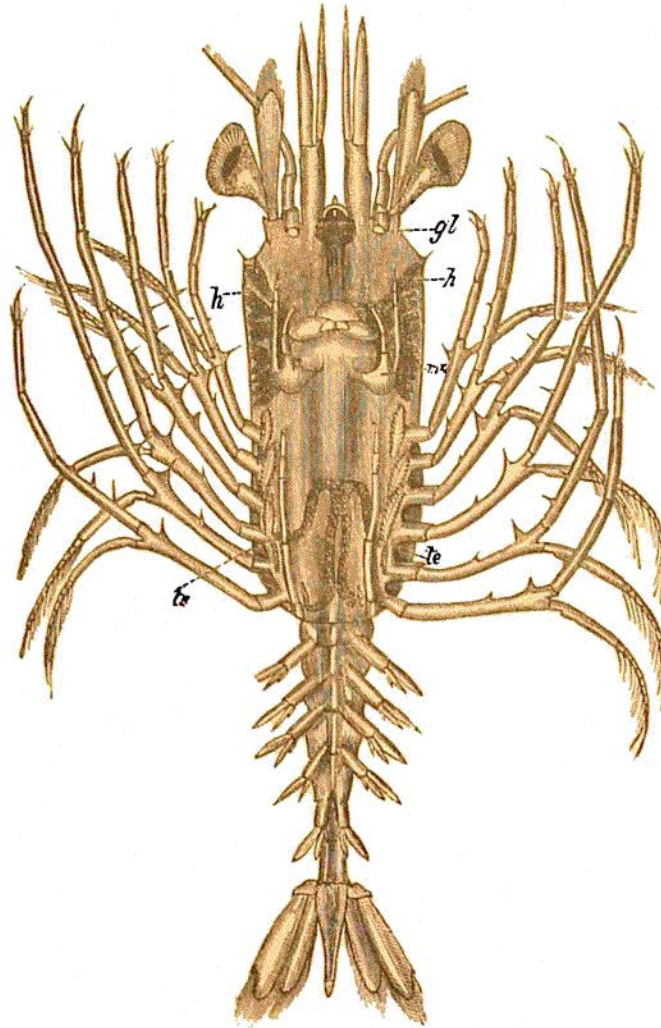


FIG. 76.—*Amphion* with seven legs, and five pairs of branchiæ; *gl*, gland; *h, h*, liver; *mx*, maxilla; *te, te*, testes.
Reduced a half from Suhn's drawing.

Their structure (fig. 2*br*) is that of a series of thin foliaceous plates resembling those of the Phyllobranchiata, forming one broad plate on either side of a central stalk.

The next specimen (fig. 76) is the most advanced that has yet been observed; it was taken with the preceding on the northern side of New Guinea, and was drawn while yet in a fresh state by Willemoes Suhn, but whether it be the same as that which is given on Pl. CXLVII. fig. 2, I am not certain, but I believe that it is, and if so the posterior pair of pereiopoda is represented much too long by Suhn.