

(2) *Flustramorpha hastigera*, n. sp.? (Pl. XXI. fig. 7).? *Porellina ciliata*, Smitt, Florid. Bryoz., p. 26, pl. vi. figs. 126-129.

Character.—Zoarium ramose, branches short, ligulate, expanding at the ends, dichotomous. Zoecia broad ovate, very convex, surface granular. Mouth semicircular, lower border straight, entire; peristome slightly thickened; three or four oral spines above, (often absent). The lunate pore close below the mouth. An aviculario-vibraculum on one side, the basal part of the mandible triangular, the apex being turned up at a right angle and produced into a spear-shaped acute flagellum.

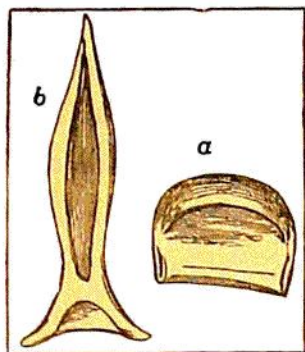


FIG. 40.—*Flustramorpha hastigera*. a, Operculum; b, mandible.

Habitat.—Station 75, lat. 38° 38' N., long. 28° 28' W., 450 fathoms, volcanic mud.

In the general character of the zoecia this form very closely resembles *Microporella ciliata*, and even in the vibraculoid character of the avicularium, a close correspondence in some respects exists, for in the latter species the acute mandible of the lateral avicularium, as noticed by Mr. Hincks, "is often prolonged into a slender vibraculoid spine or process." And in like manner in *Flustramorpha hastigera* what might be termed the triangular mandible turns up at the apex, and is produced into a beautiful spear-shaped blade of considerable length, whilst the horizontal basal part forms a fork by which it is articulated and furnished with muscles, in such a way as to admit of motion only in one plane, and to be shut down upon the rostral portion of the avicularium.

Precisely the same conditions obtain in *Flustramorpha flabellaris*, Bk., and *Flustramorpha patagonica*, n. sp.? except that in those two forms, as in *Microporella ciliata*, the flagelliform prolongation is not turned up so abruptly. It is curious to remark that this appendage is almost exactly like that of the anterior immoveable spine of *Lepralia spathulifera*, Smitt. In all these cases, therefore, this form of *flagellum* is apparently adapted only for defensive purposes.

§ B. Crustaceous.

2. *Microporella*, Hincks.

Microporella (pars), Hincks, 1877.

Cellepora (pars), Linn.; Audouin.

Lepralia (pars), Johnst.; Busk, &c.

Escharina (pars), Milne-Edw.; Gray.

Herentia (sp.), Gray.

Reptopora (pars), D'Orbigny.

Porina, *Porellina*, Smitt.

Character.—Zoarium erect and bilaminar, or encrusting and adnate. Mouth semi-