

are round markings or little cylindrical projections like the origins of rootlets. The object certainly appears to agree, even in

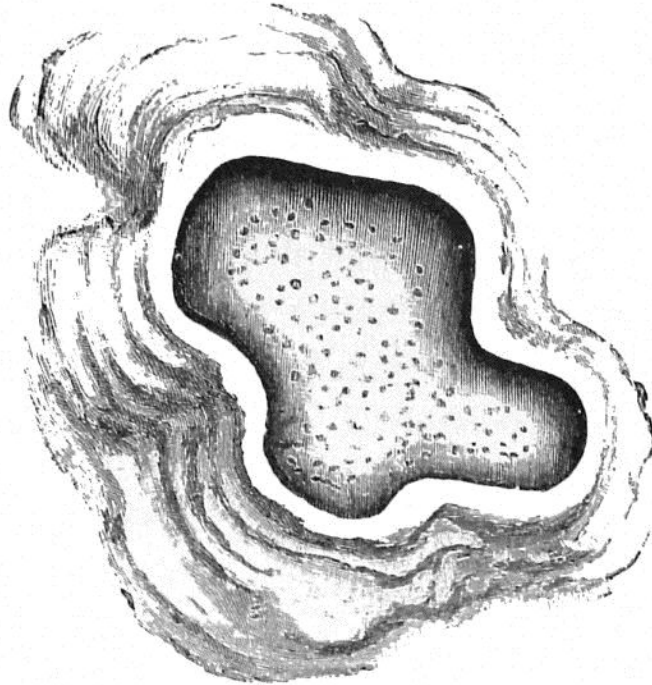


FIG. 80.—Calcareous Concretion in *Æolian* Limestone, Bermudas.

every detail, with a fossil palm-root; and as the palmetto is abundant on the islands, and is constantly liable to be destroyed by, and ultimately enveloped in, a mass of moving sand, it seemed almost unreasonable to question its being one. Still, something about the look of these things made me doubt, with General Nelson, whether they were fossil palms, or, indeed, whether they

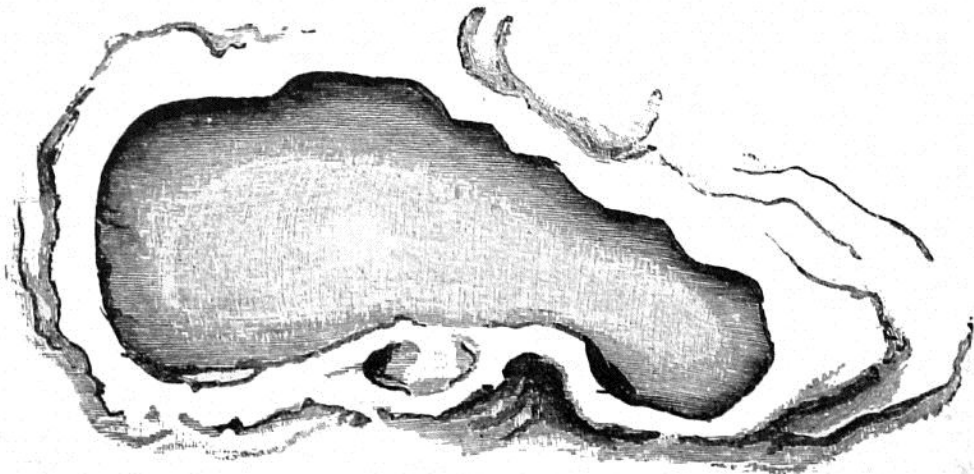


FIG. 81.—Calcareous Concretion in *Æolian* Limestone, Bermudas.