

prominent. This capsule is, however, absent, or, at all events, exists in a very modified form, in the more typical groups.

The body may be entirely naked, a mere sphere of sarcode giving off pseudopodia; or it may have a more or less fully-developed skeleton; sometimes in the form of separate horny or siliceous spicules, very like the spicules of sponges, disposed in an irregular net-work over the surface. In one interesting form (Fig. 51), which is especially abundant on the surface in some parts of the Pacific, minute echinated *calcareous* spheres, looking in outline like the rowels of spurs, are scattered irregularly in a fine gelatinous envelope which incloses the granular sarcode and oil-cells. We were familiar with these calcareous bodies in the soundings, but we had always taken them for the spicules of a Holothurian, which they much resemble. In the two groups

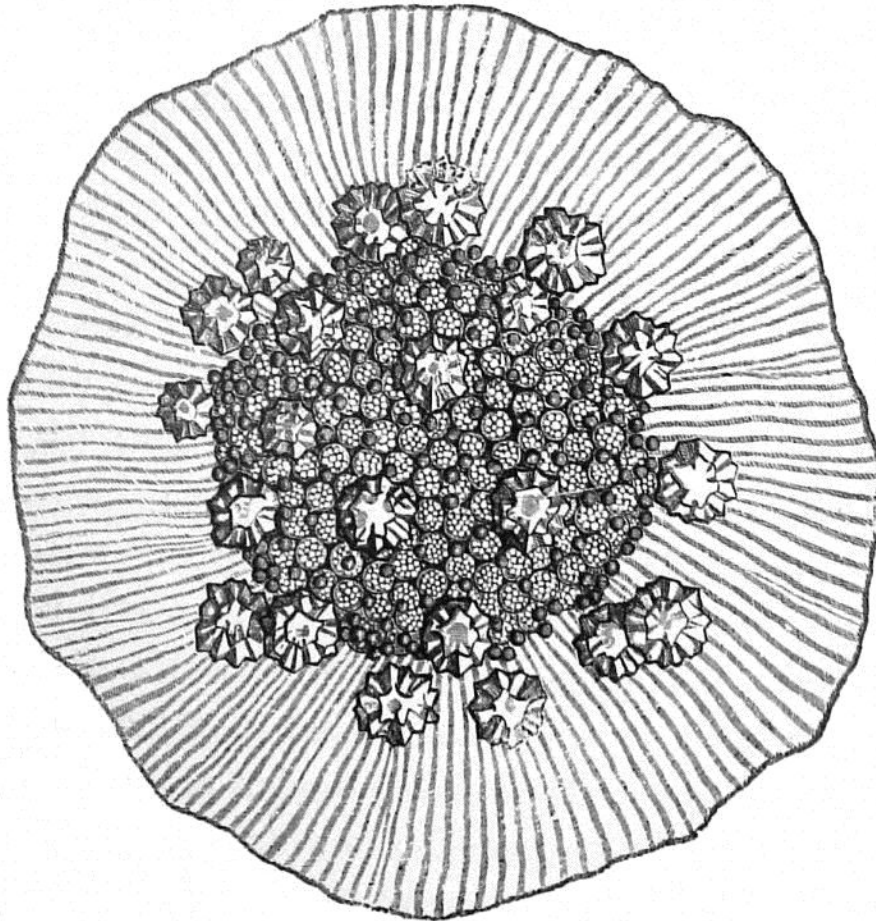


FIG. 51.—*Calcaromma*\* *calcareo*, WYVILLE THOMSON. With the pseudopodia contracted. From the surface. Two hundred times the natural size.

\* *Calcar*, a spur.