

*Pseudorhombus*, Blkr.

Dr. Hector has kindly sent to me the specimen from 400 fathoms which was given him by Sir Wyville Thomson for description, and which served as a type of his *Pseudorhombus boops*. On comparing it with the second specimen from 150 fathoms, brought home by the expedition as a "co-type" of that species, and consequently described by me under the same name in Shore Fishes, p. 26, I find considerable differences in the proportions of various parts of the head; differences which are quite in accordance with the depths at which the two specimens were found, and which are sufficiently developed to call for specific distinction. I give here comparative descriptions and figures of the heads of both specimens, from which it will be seen how far the development of bathybial characters has proceeded in the specimen from the greater depth.

*Pseudorhombus hectoris*.

*Pseudorhombus boops*, Günth., Report on the Shore Fishes, Zool. Chall. Exp., pt. vi. p. 26 (not Hector).

D. 117. A. 89. P. 12. L. lat. 78.

The dorsal fin commences above the nostrils. The height of the body is two-fifths of the total length (without caudal), the length of the head nearly one-fourth. Scales ciliated; those on the head and on the anterior part of the body smaller than those on

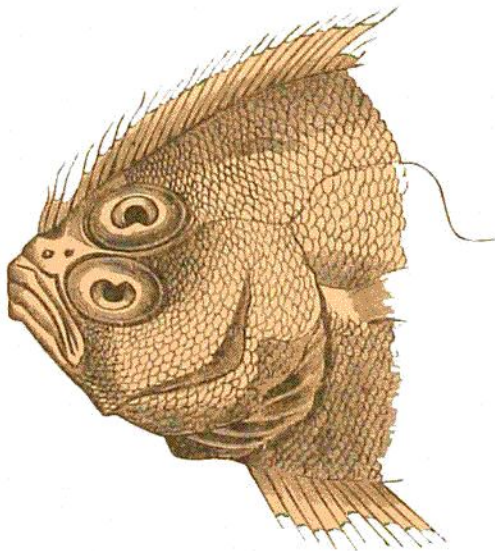


FIG. 4.—Head of *Pseudorhombus hectoris*.

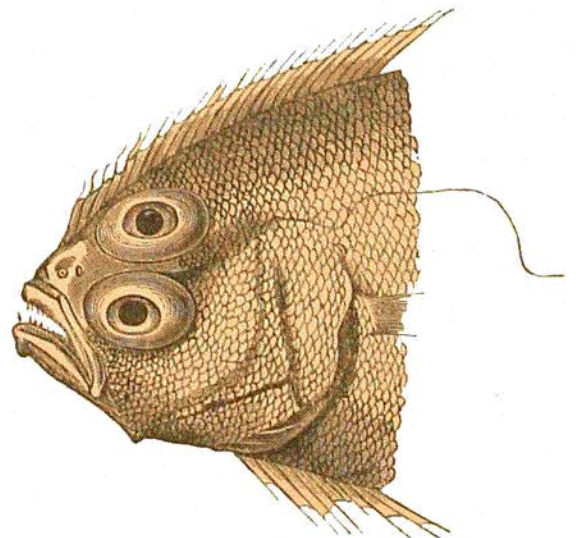


FIG. 5.—Head of *Pseudorhombus boops*.

the tail. Interorbital ridge very narrow and naked. No spines or tubercles along the lateral line or the base of the fins. The curve of the lateral line is strong, but flat above. Snout rather shorter than the eye, the diameter of which is two-sevenths of the length of the head. Lower jaw scarcely prominent when the mouth is shut. The