

The three remaining segments are subequal; the anterior part of the segment is narrow and forms a constricted portion, connecting the segment with the one in front; the lateral regions are wider posteriorly, and their lateral margin slopes outwards and backwards; the postero-lateral angle of each segment is furnished with a short sharp spine.

The *abdomen* is elongated, and slightly wider anteriorly than posteriorly; it is separated by a constriction from the segment in front. The abdomen terminates posteriorly in an obtusely rounded extremity, in front of which, on each side, is the

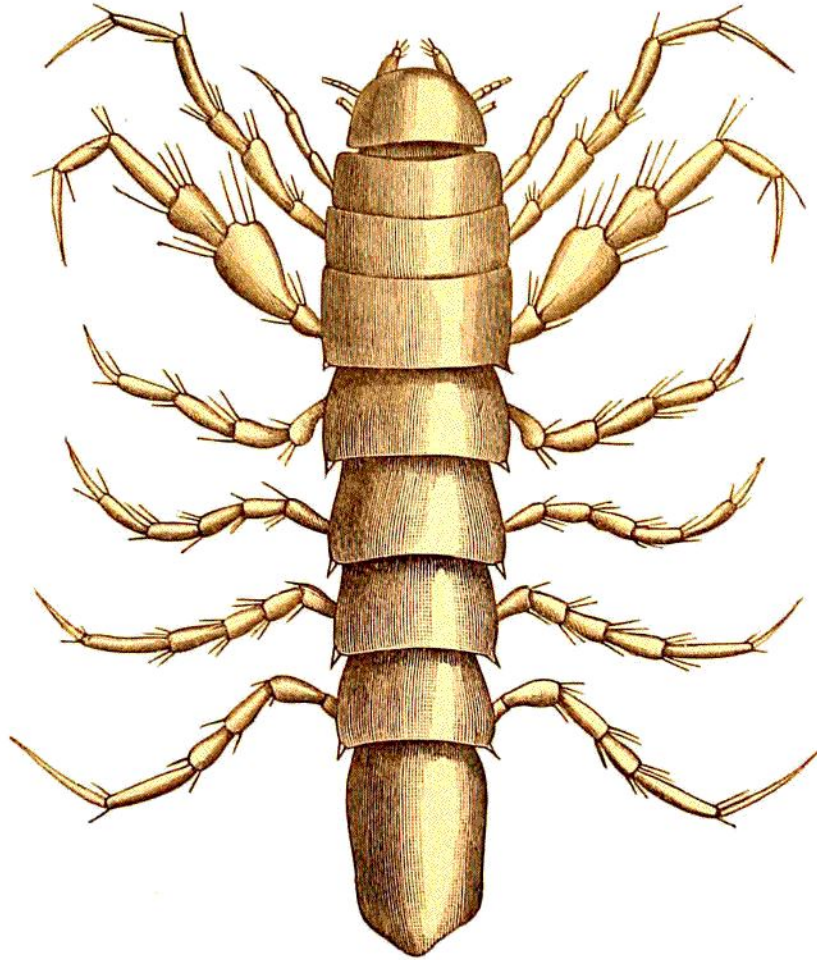


FIG. 2.—*Macrostylus latifrons*, n. sp.

articular surface of the uropoda. The length of the abdomen is about equal to that of the two preceding segments of the thorax. Its lateral margins are smooth. *Eyes* are completely absent.

The *antennules* are articulated close to the antennæ on the antero-lateral margin of the head; the appendages are very short, being about one-half the diameter of the head itself at the point where they are articulated. The basal joint is the stoutest, and there are five joints altogether, of which three may be allowed to the flagellum; the distal joints are very much more slender than the proximal. The terminal joint bears a single olfactory hair.