

distinct assemblage of animal and plant life in the upper water-layers.

On the morning of Monday 25th April we anchored off Gibraltar, where we had our boilers overhauled, and procured reserve rollers and blocks, as well as new swivels for the trawl line.

Currents in
the Strait of
Gibraltar.

During our stay at Gibraltar we made two short trips: one to the Strait to study the currents, and the other to the Mediterranean to test our pelagic appliances. The Strait of Gibraltar has

for a long time past attracted the attention of hydrographers. Through this narrow channel the exchange of water between



FIG. 45.—PORTUGUESE FISHERMAN.

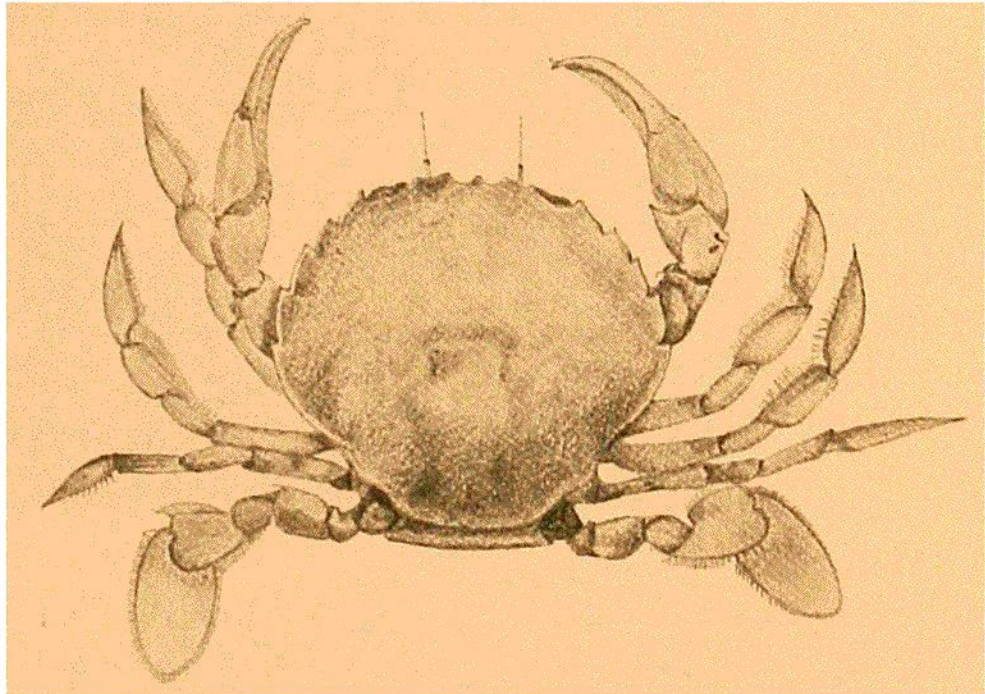


FIG. 46.—PELAGIC CRAB (*Polybius henslowi*, Leach). Nat. size.

the Atlantic and the Mediterranean takes place, and there are great fluctuations in the two streams. A knowledge of the laws that govern the currents of this marine thoroughfare